

Olympia Little Theatre

Post Office Box 7882

Olympia, WA 98507

[www.olympialittletheatre.org](http://www.olympialittletheatre.org)

ADDRESS SERVICE REQUESTED



2023-2024 SEASON



## Death by Design

by Rob Urbinati

Set during a weekend in an English country manor in 1932, Death by Design is hilarious, delightful and mysterious. Edward Bennett, a playwright, and his wife, Sorel Bennett, an actress, flee London and head to Cookham after a disastrous opening night. But various guests arrive unexpectedly – a conservative politician, a fiery socialist, a nearsighted ingénue, a zany modern dancer – each with a long-held secret. When one of the guests is murdered, it's left to Bridgit, the feisty Irish maid with a macabre interest in homicide, to solve the crime. Death by Design is more than homage – it's a new classic.

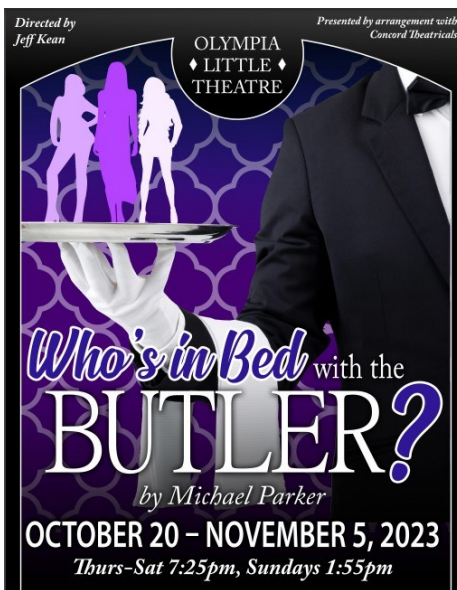
**Sept. 8–24, 2023**

7:25pm: 9/8, 9/9, 9/15, 9/16, 9/21, 9/22, 9/23

1:55pm: 9/10, 9/17, 9/24

## Who's in Bed with the Butler?

A California billionaire has bequeathed all of his assets to his only daughter, Constance – except the \$22 million yacht he wanted Josephine to have, a \$25 million art collection left to Renee, and some priceless antique automobiles willed to Marjorie. Constance arrives at her father's mansion with her lawyer, determined to find out who these women are and to buy them off or contest the will. The butler seems to hold the key, and she learns from him that the three sultry ladies were her father's lovers. She also discovers that the yacht, the art, and the cars have vanished. Could the butler be behind the shenanigans – and is he carrying on with all of the ladies in question?



**Oct. 20–Nov. 5, 2023**

7:25pm: 10/20, 10/21, 10/27, 10/28, 11/2, 11/3, 11/4

1:55pm: 10/22, 10/29, 11/05

# Season Ticket Order Form

We have simplified our order form! If you have questions call 360-786-9484 or e-mail [oltadmin@olympialittletheater.org](mailto:oltadmin@olympialittletheater.org)

NAME: \_\_\_\_\_

ADDRESS: \_\_\_\_\_

CITY, STATE, ZIP: \_\_\_\_\_

PHONE: \_\_\_\_\_

E-MAIL: \_\_\_\_\_

☐ CHECK IN AT THE DOOR AND WE'LL HAVE YOUR RESERVATION 😊

☐ TAKE ALL SEVEN SHOWS

or

☐ BUILD YOUR OWN PACKAGE

(choose 5 or more show below)

- ☐ Death by Design
- ☐ Who's in Bed with the Butler
- ☐ It's a Wonderful Life
- ☐ Love, Sex and the IRS
- ☐ 84 Charing Cross Road
- ☐ Savannah Sipping Society
- ☐ Rose's Dilemma

**Performance Day/Time:** (choose one)

\*Note – prices below are for Season Tickets

Single tickets are \$2 higher

- ☐ Opening Night (Friday at 7:25pm) **\$10**
- ☐ First Saturday (7:25pm) **\$12**
- ☐ First Sunday Matinee (1:55pm) **\$12**
- ☐ Second Friday (7:25pm) **\$14**
- ☐ Second Saturday (7:25pm) **\$14**
- ☐ Second Sunday Matinee (1:55pm) **\$14**
- ☐ Thursday performance (7:25pm) **\$12**
- ☐ 3<sup>rd</sup> (final) Friday (7:25pm) **\$14**
- ☐ 3<sup>rd</sup> (Final) Saturday (7:25pm) **\$14**
- ☐ Closing Sunday Matinee (1:55pm) **\$14**

(Number of shows) x (price for night chosen) = Season Ticket price

\_\_\_\_\_ X \_\_\_\_\_ = Season ticket price \$ \_\_\_\_\_

Options:

- ☐ OLT membership (\$10/person) \$ \_\_\_\_\_
- ☐ General Fund Donation \$ \_\_\_\_\_
- ☐ Other Donation \$ \_\_\_\_\_  
(What \_\_\_\_\_)

(Total all lines)

**TOTAL ENCLOSED** \$ \_\_\_\_\_

Return this form with your check to  
**Olympia Little Theater**  
PO Box 7882  
Olympia, WA 98507

\*exchanges are allowed just call or email us



We are happy to bring you Olympia Little Theatre's 84th year of affordable community theater! We are one of the oldest continually running arts organizations in the state and are proud to be a welcoming part of the South Sound region, open to all who love doing and going to theater. We've weathered the pandemic and are still going strong! We've got a season you will enjoy, with a mix of comedy, drama, mystery, and farce—plus a classic Christmas story. You may have noticed that we've changed the order form a bit; this was done to make it simpler for you to choose the days you want to have. So come see a show or two (or six or seven), volunteer backstage, or even come out and audition! We love having new folks become part of the OLT family!

*Welcome!*



**Dec. 1–17, 2023**

7:25pm: 12/1, 12/2, 12/8,

12/9, 12/14, 12/15, 12/16

1:55pm: 12/3, 12/10, 12/17

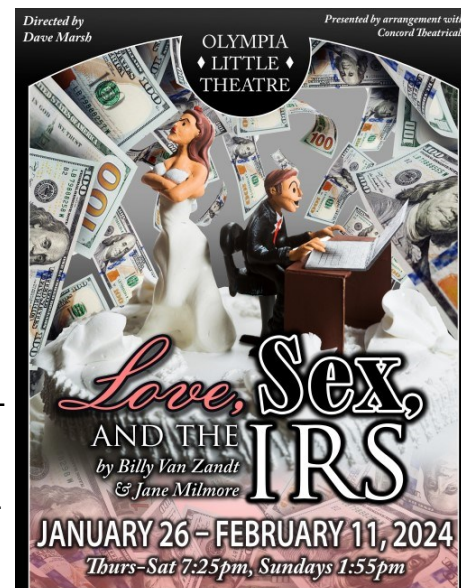
## **Love, Sex, and the IRS**

**by Billy Van Zandt and Jane Milmore**

The classic farce that everyone should be doing – especially around tax time! Jon Trachtman and Leslie Arthur are out of work musicians who room together. To save money, Jon has been filing tax returns listing the pair as married. The day of reckoning comes when the IRS informs the “couple” they’re going to be investigated. Leslie masquerades as a housewife, aided by Jon’s fiancée, Kate. Complicating matters further, Leslie and Kate are having an affair behind Jon’s back, Jon’s mother drops in unexpectedly to meet her son’s fiancée, and Leslie’s ex-girlfriend shows up demanding to know why Leslie won’t see her anymore.

## **It's a Wonderful Life: a Live Radio Play by Joe Landry**

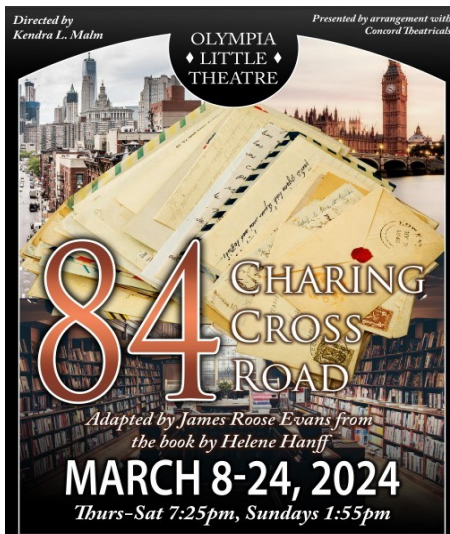
This beloved American holiday classic comes to captivating life as a live 1940s radio broadcast. With the help of an ensemble that brings a few dozen characters to the stage, the story of idealistic George Bailey unfolds as he considers ending his life one fateful Christmas Eve.



**Jan. 26– Feb. 11, 2024**

7:25pm: 1/26, 1/27, 2/2, 2/3,  
2/8, 2/9, 2/10

1:55pm: 1/28, 2/4, 2/11



## 84 Charing Cross Road

by Helene Hanff and James Roose-Evans

This wonderful show is a dramatization of business letters between a young struggling writer in New York and an antiquarian book store in London. In a sense, these are also love letters. They are about the love of good literature. The play takes place over a twenty year period, beginning in 1949 when Helene Hanff (played on Broadway by Ellen Burstyn) first writes Marks & Co. and ends in 1969 with the death of Frank Doel, the delightfully dusty supplier of so many old volumes to Helen who has shown her gratitude

through the years by sending "care packages" to the staff of Marks & Co.

**Mar. 8–24 , 2024**

7:25pm: 3/8, 3/9, 3/15, 3/16,  
3/21, 3/22, 3/23

1:55pm: 3/10, 3/17, 3/24

Olympia Little Theatre is almost entirely operated by volunteers and we have a great time doing it. You should join us!

Taking tickets at a production, serving on the Board of Trustees, building sets, running lights and sound, costuming, working backstage, on-stage, part-time, or full-time, OLT volunteers do it all!

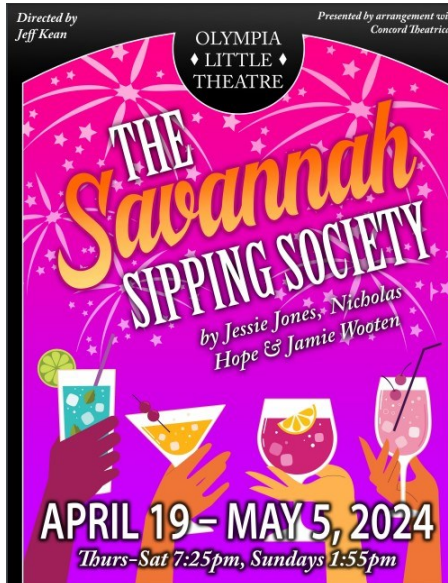
Shouldn't you be one of us? Use your skills and free time to make quality, affordable theater in Olympia and join us for the fun!

All ages and skill levels welcome, call TODAY at 360-786-9484 or email [oltadmin@olympialittletheatre.org](mailto:oltadmin@olympialittletheatre.org)

**Volunteers!**



**We Need You!**



**Apr. 19–May 5, 2024**

7:25pm: 4/19, 4/20, 4/26,  
4/27, 5/2, 5/3, 5/4

1:55pm: 4/21, 4/28, 5/5

## Rose's Dilemma

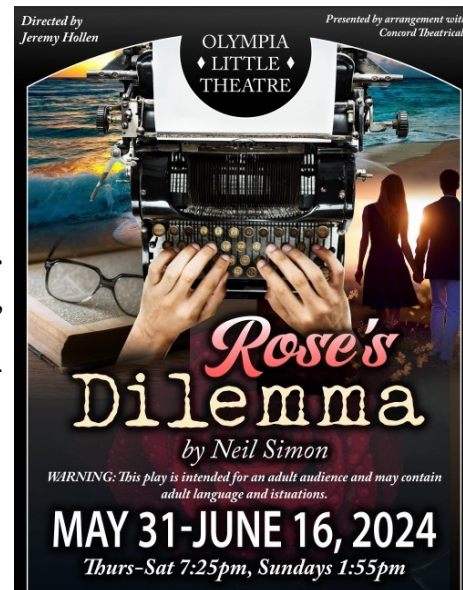
by Neil Simon

In her beach house in the Hamptons, celebrated writer Rose Stern stands at a crossroads: she hasn't written anything in years and money is getting short. Her former lover, literary lion Walsh McLaren, offers her-from beyond the grave-an opportunity to regain her celebrity and gross millions. It's not going to be easy and a "ghost" writer is required setting in motion another touching and unpredictable romantic theatrical by America's premier Pulitzer Prize-winning comic playwright.

## Savannah Sipping Society

by Jones Hope Wooten

In this delightful, laugh-a-minute comedy, four Southern women, all needing to escape the sameness of their day-to-day routines, are drawn together by Fate—and an impromptu happy hour—and decide it's high time to reclaim the enthusiasm for life they've lost through the years. Over the course of six months, filled with laughter, hilarious misadventures, and the occasional liquid refreshment, these middle-aged women successfully bond and find the confidence to jumpstart their new lives. Together, they discover lasting friendships and a renewed determination to live in the moment—and most importantly, realize it's never too late to make new old friends.



**May 31–June 16 , 2024**

7:25pm: 5/31, 6/1, 6/7, 6/8,  
6/13, 6/14, 6/15

1:55pm: 6/2, 6/9, 6/16